

A  
SPRING  
MUSICALE

(A Production of the Los Angeles Organists Breakfast Club, Inc.)

APRIL 24TH, 1966 - 3 P.M.

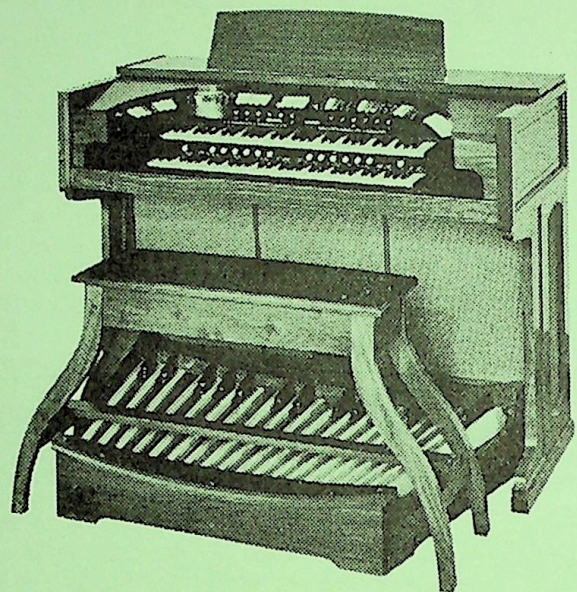
FEATURING

**DON BAKER**

*at the Conn Deluxe Theatre Organ*

# THE **CONN** DELUXE THEATRE ORGAN

Furnished through the courtesy of  
GOULD MUSIC COMPANY



**GOULD  
MUSIC  
COMPANY**  
Since 1911

Anaheim, 225 W. Lincoln KE. 3-1858  
Glendale, 540 N. Brand CI. 6-2536  
Pasadena, 1296 E. Colorado SY. 6-8189  
Whittier, 167 S. Greenleaf OX. 6-8280  
W. Covina, 224 S. Glendora ED. 2-8688

## A WORD ABOUT THE **ORGANS**...

The Conn Organs used by Don Baker in all his concerts and engagements are the product of the Conn Organ Corporation. The Conn line consists of seven distinct models designed to meet every need of the amateur or professional organist. Mr. Baker prefers the Conn Organ for its range of performance, incredible variety of musical expression and for its pipe-like qualities.



*Don Baker*

## A WORD ABOUT THE **ARTIST**...

Don Baker, born in St. Thomas, Ontario, Canada, began his long tenure into the world of music with piano lessons at the age of eight. Twelve short years later he accepted his first theatre orchestra position as pianist for a Flushing, L.I., theatre and unknowingly launched his famous theatre organ career. One night, as the theatre patrons impatiently awaited the appearance of the regular organist, the manager requested Don to "fill-in." This he did for two hours with the result that he liked it! He decided to teach himself and his success is attested to by the fact that within two years he had scored with successful engagements at the Rivoli and Rialto Theatres in New York City.

Thus was born the career that was to eventually thrill millions, both here and in England, through personal and theatre appearances, countless recordings and the radio.

Don's longest and most memorable theatre appearance spanned almost 14 years at the world famous four-manual organ in the Paramount Theatre, New York City. It was during this period that "community sings" reached the height of their popularity. Along with this theatre engagement Don was drafted to make 50 short subjects for Columbia Pictures.

In recent years Don has been more than busy with engagements in our nation's most famous theatres and supper clubs. In his spare time he has made numerous recordings to the delight of the continually expanding audience of organ music enthusiasts. His most recent "Curtain Time with Don Baker" features many of the selections you will hear during this concert.

**MR. BAKER**—Comes to us through the courtesy of Conn Organ Corporation—Elkhart, Indiana

# LOS ANGELES ORGANISTS BREAKFAST CLUB, INC.

A Non-Profit Corporation

## OFFICERS

"Bud Taylor, President  
Carl Simone, Vice-President

Tom Rork, Secretary  
Doryce Talbott, Treasurer

## EXECUTIVE COUNCIL

Dorothy Leonard  
Larry Beyer  
Harry Jenkins

Virginia Sooter  
Jim Day  
Rita Collins

## ALTERNATE COUNCIL

Gordon Kibbee  
Bob Garretson

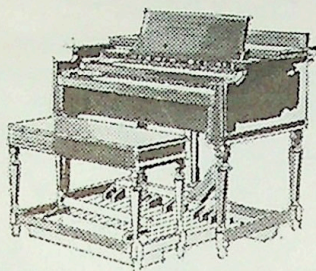
Jerry Heiman  
Bob Elliott



Scholarship audition applications may be had by inquiring at the desk on your way out—or telephone Bob Garretson after 11 a.m., 767-3706.

The auditions will be held April 30, 1966, at the Musician's Auditorium, 817 North Vine Street, Hollywood starting at 12:00 noon.

Applications for "Patron Membership" may also be had at the desk after the concert.



# *Pedal and Drawbar*

APRIL 14, 1957



VOL. 2, NO. 4

OFFICIAL PUBLICATION OF

## LOS ANGELES ORGANISTS BREAKFAST CLUB

**YOU ARE CORDIALLY  
INVITED TO THE  
APRIL BREAKFAST  
AT THE**



**ENCORE  
ROOM**

9536 Long Beach  
Boulevard  
South Gate

**Sunday, April 14th**  
From One P.M.

**TOMMY  
HEARN,  
HOST**

Open At Twelve

Breakfast \$1.25

**LOS ANGELES ORGANISTS'  
BREAKFAST CLUB**

**Bob Garretson**, President  
**A. Gordon Kibbee**, Vice-President  
**Jim Day**, Secretary  
 Editor, **PEDAL AND DRAWBAR**  
 407 E. Duarte Rd., Arcadia — Hillcrest 6-2397  
**Harry Lawrence**, Treasurer  
 2419 S. Cochran St., LA 16. WE 9-9635  
**EXECUTIVE COUNCIL**

GORDON KIBBEE                      HARRY LAWRENCE  
 PAUL BEAVER    JIM DAY    SYLVIA GREEN

**LAOBC ELECTS OFFICERS**

Above is the roster of officers for 1957-58, elected at the quarterly meeting of March 1st.

**MAY BREAKFAST**

**The Santa Lucia Restaurant**  
**7839 Pacific Blvd., Huntington Park**  
**Sunday, May 19th**



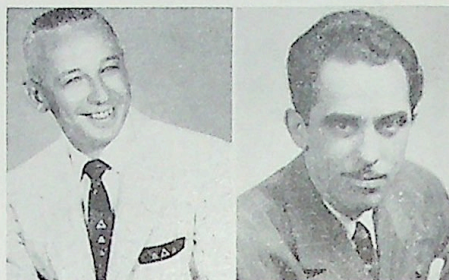
**Dorothy O'Neil, Hostess**

**BREAKFAST SCHEDULE**

**JUNE - TO BE ANNOUNCED**  
**JULY 21 - RAND'S ROUND-UP**, Ventura Blvd., Sherman Oaks. **CARL SIEMON**, Host.

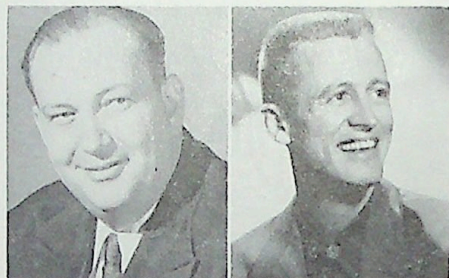
**Club Officers**

PRESIDENT                      VICE-PRES.



**Bob Garretson                      Gordon Kibbee**

SECRETARY                      TREASURER



**Jim Day                      Harry Lawrence**

COUNCIL                      COUNCIL



**Sylvia Green                      Paul Beaver**

**The P & D Story**

The changes in *PEDAL AND DRAWBAR's* format are probably becoming a bit confusing and our readers are entitled to an explanation. Opinion was fairly divided on the February and March issues, with a shade in favor of the large page. Now we are down to the smaller size again, so if you're still interested in why, read on...

First, it should be explained that *PEDAL AND DRAWBAR*, while strictly a labor of love, is almost entirely a one-man production. (The Editor, being a professional organist and entertainer, has never been averse to tooting his own horn now and then.) The whole bit goes back a few years to a little print shop in Bridgeport, Conn., where in the days before family and hobbies claimed his time, a hotel organist with the four walls of his room closing in on him would spend his spare hours playing gin rummy with a printer friend, and diluting the contents of a soda bottle with printers' ink, while the automatic press ground away in back.

While achieving absolutely *no* distinction at cards, the pedalpusher was helplessly exposed to this branch of the graphic arts, and it was inevitable that he should get some ink on his grubby fingers. From this sordid beginning came an intense interest in the craft and it became somewhat of a hobby. Through the good will and exquisite patience of a number of hard-

**March Breakfast**

The beautiful and spacious Sequoyah Restaurant in Rivera was the scene, on March tenth, of one of the Club's most successful breakfasts, with Bill Thomson as host. For the first time in months, all who came were able to see as well as hear the entertainment. While seating space was, as usual, at a premium, despite the place's ample capacity, eventually everyone got a table, and the party rolled merrily and decibelfully (with three Leslies and an HR-40) on, until the evening, when Bob Brown, his always capable MC chores nearly over, seated himself at the organ and proceeded to locate a pleasing number of lost chords, including one of your correspondent's favorites, "*Jesu Bambino*."

Guests were many and varied. From San Diego came Danny Topaz. Eddie Baxter was a very welcome guest, and in the non-organ department, Chuck Slaugh-

(CONTINUED ON BACK PAGE)

working printing folk, he learned just enough about the business to be able to demonstrate frequently, painfully and sometimes expensively how much *more* there was to learn.

When, in the summer of 1956, it was apparent that the Club was in need of some sort of publication, it looked like a good idea to wed a hobby to some sort

(Continued on Next Page)

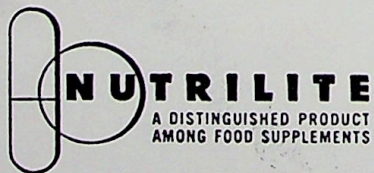
**Do You Like Music?**

WEBSTER'S NEW INTERNATIONAL DICTIONARY, UNABRIDGED, SECOND EDITION, (WOW!) DESCRIBES MUSIC IN PART: "...the science or art of pleasing thru a combination of tones... WHAT A SIMPLE DEFINITION!

WE MAY NOT HAVE BEEN ABLE TO DEFINE **MUSIC** so simply, but we did something almost as good. . . we have gathered into one shop the greatest variety of phonograph records imaginable. . . **Music in every conceivable category**. . . Over 23,000 different long playing albums and 50,000 collector's items on 78 rpm! We're open every weekday till 10 pm., Saturdays till midnight and Sundays till 5 pm. If you're in the neighborhood, drop in, if not, write for your favorite records. . . we'll pack and ship by return mail.

**San Gabriel Valley Record Shop**

Fourth St., and Valley Boulevard, Alhambra  
 Phone: ATLantic 1-8007



*More Than Just "Vitamins"*

**NUTRILITE IS THE ONLY**  
**VITAMIN-MINERAL FOOD SUPPLEMENT**  
**WITH THE EXCLUSIVE NUTRILITE**  
**NATURAL PLANT BASE**

Available ONLY Thru **NUTRILITE** Distributors

CALL OR WRITE

**Jimmie R. Cowan**

5936½ Burchard St.,  
 Los Angeles 34

Webster 5-5989  
 10 To 4

NEW ADDRESSES:

CHUCK DIETZ - 5320 Loma Linda Ave., LA 27.

★ NEW MEMBER ● HONORARY MEMBER

HAROLD ANDERSEN - The Venise, West Covina. Nitely except Sunday and Monday.

DICK AURANDT - Channel 2, TV: "Captain Jet."

BOB BARRON - Valdez Restaurant, 141 S. Granada, El Monte. Nitely except Thursday.

PAUL BEAVER - With "The Leaders" Trio, booking thru MCA.

ED BENEDICT - Teaching, Birkel-Richardson Music Co., 730 W. 7th St. VA ndyke 1241.

VIVIAN BENEDICT - Teaching, Birkel-Richardson Music Co., 925 Westwood Blvd. GR anite 9-3729 or BR adshaw 2-3744. AVAILABLE two nights a week.

BEE BLONK - AVAILABLE. Frontier 9-7770.

BOB BROWN - Julie's Fireside Room, 3730 S. Flower St., nitely except Sunday. (Piano)

TED CAMPBELL - AVAILABLE. CHapman 5-4448.

FRANCIS J. CARTER - Don's Monterey Room, 4995 Whittier Blvd., LA.

The P & D Story (Con't.)

of productive activity, and so PEDAL AND DRAWBAR came into being. Granted the use of equipment by a friendly printer, the Editor sets the type by machine and by hand, makes up the page forms, bedevils the photo engravers, cuts the paper to size, and turns the whole amateur shebang over to a somewhat less than enthusiastic pressman. Thus the variation in the page size is due to the availability of certain size presses and to demands on the pressman's time. Successive issues of the sheet have been loaded with clinkers, to use a musical term, but the overall result has not been one to be especially ashamed of. (Such modesty ... such dangling propositions!)

The work has attracted a modest number of advertisers, cutting down the Club's deficit considerably, and it remains only for LAOBC members to make of P & D what they will. If the editorial content has been of a sameness, this can be corrected by contributions from members, of which there has been damn little to date (Now we'll see if anybody is really reading this!)

So that's the PEDAL AND DRAWBAR story. I am indebted greatly to President Garretson's moral and active support, and to many, many other members and friends, and to the immeasurable kindnesses of Rodgers & Son, Printers and Publishers of Arcadia, without whose courtesy, there would be no PEDAL AND DRAWBAR from these hands. To all who have helped, my thanks, and I'll try to keep the show on the road as long as possible.

GEORGE NEWELL has equipment for sale: A Model A console with lighted manuals, and a Leslie speaker. 2132 Fashion Ave., Long Beach, phone HEMlock 5-0300.

JEANIE COLBORNE - Mrs. George A. Pilgerrim, as of February 16.

RITA COLLINS - Ted's Broiler, 5514 E. Whittier Blvd., Thursday thru Sunday. AVAILABLE Mon. Tues. Wed., NOrmandie 5-4759.

GEORGE COVELL - Accompanist and Composer, (12-Tone Equal Interval System). 5642 Harold Way. HOLlywood 7-7616 or 2-7021.

JIMMIE COWAN - Circus Room, Seventh St., near Alvarado, nitely except Monday,

● JESSE CRAWFORD - Teaching, Penny-Owsley Music Co., 3330 Wilshire Blvd.

BEA CRIVVEA - AVAILABLE. 1910 Micheltorena, LA 39. NOrmandie 3-9087.

★ ROY DALLAS - The Brass Rail, 4403 S. Broadway. Nitely except Wednesday.

MARY DALY - Red Barn, 8701 Van Nuys Blvd., nitely except Monday. (Organ ond Piano with Don Mack.)

KERMIT DART - At his own place, the Dart Inn, 6162 Hollywood Blvd.

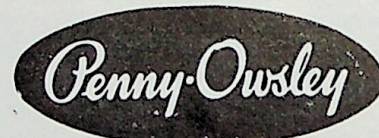
JIM DAY - Hunters' Inn, 9446 Las Tunas Drive, Temple City. Nitely except Sunday.

HELEN DELL - Crow's, Magnolia and Willow, Long Beach.

ROSE DIAMOND - AVAILABLE. DUnkirk 9-5554.

CHUCK DIETZ - Kopper Kart Restaurant, 2167 W. Florence Ave., at Van Ness. Nitely except Mon.

3330 Wilshire - 716 W. Seventh



- STEINWAY PIANOS
- HAMMOND ORGANS
- RCA COLOR TELEVISION
- Bell & Howell and Fisher High Fidelity

● STEVE and LUCILLE DONNER - Yacht Center, Box 49, Wilmington.

● WILLIAM DRIEHAUS - Formerly manager, Organ Dept., Penny-Owsley, now with Thomas Organ.

CARMEN DUNN - The Tavern, 8924 Long Beach Blvd., near Firestone, South Gate. Nitely except Sunday. Mon.-Tue.-Thur., 7-12; Wed-Fri.-Sat., 8-1.

HELEN DUREN - The Rafters, 8715 Sepulveda.

★ HELEN EATON - Carr's, Desert Hot Springs.

● RICHARD ELASSER - P. O. Box 1983, LA 28.

BOB GARRETSON - Morris Cafe, 305 E. Valley Blvd., corner Chapel, Alhambra. Nitely except Sunday. Teaching piano and organ at 8609 Remick Ave., Sun Valley. ROgers 7-3706.

GEOFFREY GLEDHILL - AVAILABLE, Casuals only. AXminster 3-2688.

MARGARET GORDON - Amble Inn, 7910 E. Olive, Paramount.

SYLVIA GREEN - Key Room, South Pasadena, Nightly except Monday. Teaching piano and organ, CR estview 1-4469.

● PATRICIA GROVER - 6317 Templeton, Huntington Park.

ROGER HAIL - AVAILABLE, NOrmandy 1-8969.

SHIRLEY HALL - Rand's Round-up, 8401 S. Figueroa. Nitely except Sunday and Monday.

BOB HAMILTON - Harvest Room, San Gabriel Lanes, 215 San Gabriel Blvd., S. of Las Tunas. Nitely except Sunday and Monday.

TOMMY HEARN - Encore Room, 9536 Long Beach Blvd., South Gate.

LYNNE HEISS - AVAILABLE, Monday thru Thursday. DUnkirk 9-1651.

ROBERTA JAYNE - AVAILABLE, HEMlock 8-7771.

J. WESLEY JOHNSON - The Jumpin' Jack, Slauson Blvd. and Overhill Drive.

HAL KEARNS - AVAILABLE for casuals. 122-B Serra St., San Clemente. HYacinth 2-3729.

KEN KECK - Cate Restaurant, 6501 Sepulveda Blvd., at Centinela, LA.

GORDON KIBBLE - Teaching at Encino studio, near Ventura & Sepulveda Blvds. STATE 9-3042.

★ MARY KING - Rainbow Angling Club, Azusa. Nitely except Monday.

REBA KIRK - Teaching at 1421 W. 91st Place, LA 44. PLymouth 5-4352.

HARRY LAWRENCE - Oak Room, Hotel Hoover, Whittier. Nitely except Sunday.

LORETTO LEE - The Huddle, Wilshire and La Brea. Nitely except Saturday.

LEW LEWMAN - Teaching, 3670 Keystone Ave., LA, 34. VErmont 9-9035.

DON MACK - Red Barn, 8701 Van Nuys Blvd., Nitely except Monday. (Piano and organ with Mary Daly)

PEGGY MARION - AVAILABLE. DUnkirk 3-2676.

DAVID MAY - AVAILABLE. TOpaz 1-8786.

BILL McCOLLOCH (Mack) - Salesman, Penny-Owsley Co., 718 W. 7th St. TRinity 3686.

● HARRY and HELEN McDADE - Formerly Manager, Penny-Owsley Organ Dept.

JOHAN McNEIL - AVAILABLE for casuals only, also teaching. 9116 W. 3rd St., Beverly Hills, CRestview 5-6469.

JIMMIE MEANS - AVAILABLE. HEMlock 3-4663.

EDDIE MEIKEL - The Shangri-La Restaurant, 9604 Whittier Blvd., Pico. Nitely except Sunday.

JIM MELANDER - Teaching, 2942 N. Lake Ave., Altadena. SYcamore 8-1098.

BOB MOREAU - JACK'S CORSICAN ROOM, 5430 E. 2nd St., Long Beach. Nitely ex. Mon.

BOB MORGAN - AVAILABLE. 1335 S. Harvard Blvd., LA 6. REpublic 3-7003.

BUDDY NOLAN - Hacienda Hotel, 301 S. Western Ave., San Pedro.

DOROTHY O'NEIL - Santa Lucia Restaurant, 7839 Pacific Blvd., Huntington Park. Tues. thru Sat.

● JAN ORCHARD - 1020 N. Alfred, LA 47.

EDDIE PADDOCK - AVAILABLE. Also teaching, 5367 Grace Place, LA. RAYmond 3-4963.

★ VERN PETERSON - AVAILABLE ATLantic 2-4556.

JACK PHILLIPS - Happy Hollow Restaurant, 1717 N. Silverlake Blvd. Nitely ex. Sun. and Mon.

NELL ROGERS - The Rosemont, Burbank, (week-ends. (Piano) AVAILABLE for casuals. Also teaching Organ and piano, CHurchill 9-0413.

★ TOM RORK - AVAILABLE, Care of Kermit Dart, Hollywood 4-4136.

NINA RUSSELL - The Dinnerhorn, Newport Beach, Nitely except Tuesday.

BOB ST. JOHN - Alibi Club, 480 W. 2nd St., Pomona. Nitely except Monday.

RANDY SAULS - Monte's, Hollywood Way at Glenoaks, Burbank. Teaching at Penny-Owsley, 4525 Van Nuys Blvd. STAnley 7-4188 or STATE 9-0239.

CARROLL SAVAGE - Sally's Cocktail Lounge, 843 S. La Brea, Inglewood. Nitely except Mon.

RAYMOND SHELLEY - Teaching piano and organ 121 N. Vo'utsia, Wichita, Kansas. Playing occasional shows at Miller Theatre in Wichita, (on pipe organ.)

★ LARRY SEIBERT - Clock Steak House, Las Tunas Dr. & Rosemead Blvd., Temple City. Off Sun.

CARL SEIMON - Rand's Round-Up, Ventura Blvd., Sherman Oaks. Nitely except Monday.

LARRY SMITH - Anderson's, Atlantic Blvd., near Slauson.

RAMONA GERHARDT SUTTON - Recording.

DORIS TALBOTT - Rick's Santa Maria Rancho, in Santa Maria. Nitely except Sunday.

MOREY THAL - Associated Realtors, 457 North Palm Canyon Drive, Palm Springs.

BILL THOMSON - Vacationing.

POMPING VILA - Vagabond's House, 2505 shire Blvd. Nitely except Monday.

DON WARNER - The Castle, 208. E. Queen St., Inglewood. Fri. & Sat. AVAILABLE other nites.

BARBARA WELLS - AVAILABLE. REpublic 1-7629. Two to Six p.m.

MADELINE WILLEY - Michael's Restaurant, 6309 E. Washington Blvd., at the Santa Ana Freeway, Nitely except Sunday and Monday.

BILL WILLIAMS - The Hearth, 7857 E. Florence, Downey. Nitely except Sunday.

EMILE WILLIAMS - Ventura Inn, 14016 Ventura Blvd., Sherman Oaks. Nitely ex. Monday.

LOIS WOLFE - Sierra Restaurant, 16227 Lakewood Blvd., Bellflower. Nitely except Sunday.

FRANK WOOD - AVAILABLE and teaching Hammond, pipe and Wurlitzer at 716 W. Florence, West Covina. Also Custom tape recordings.

● EILEEN "Woody" WOODYARD - Teaching, 182 Argonne Ave., Long Beach. HEMlock 9-6523.

● MARK WRIGHT - Clark & Wright Co., 7302 Atlantic Blvd., Bell. LUdlow 7-3656.



## New Members

June, September and December, and may be submitted at any time, thru any member of the Club.

A recent arrival from Wisconsin is **La Verne Peterson**, who likes to be called just "Vern." He has a varied background as organist, composer and conductor, having developed and conducted the Wausau, Wis. Symphony from 1943 through 1954, during which time he studied with Pierre Monteux and was Musical director of Radio WSAU, in addition to his duties as organist and choirmaster of St. John's Church in Wausau. His musical compositions have won a number of prizes in state and national competition and he recently completed a work called "Repatee In Rhythm," which he has dedicated to the Club.



La Verne Peterson

Voted a member several months ago, (P & D goofed!) petite **Helen Duren** is a graduate of the Eastman School of Music. She has played a number of lengthy engagements in the area, including the San Fernando Valley Country Club, Wheel Cafe, Oak Room, Reseda Bowl, the Audio Fair, Turf Club, Shangri-La, and her current engagement, The Rafters, on Sepulveda Blvd., Sepulveda.



Helen Duren



Larry Seibert

Back in Paterson, New Jersey, **Larry Seibert** began his professional career at the age of 13, had his own band all thru school, and was a member of the 3rd Coast Artillery Band during the war. He travelled with the "Cinema Bums" group, using a Model M organ, and in 1952 began as a single, playing, among other dates, Eaton's Santa Anita, Oak Room, the Dinnerhorn, Covina. He is currently playing at the Clock Steak House in Temple City and has in release an LP album on MacGregor label titled "Larry Plays." His original music has been heard on "Heartbeat Theatre," a transcribed show, and he writes, produces and directs "Spots By Seibert," for singing commercials.

Other new members, on whom we hope to report in subsequent issues, are **Roy Dallas, Helen Eaton, Mary King and Tom Rork**. PEDAL AND DRAWBAR is pleased to welcome to LAOBC all of the above organists.

### FOR RENT

HAMMOND ORGAN AND LESLIE  
Home or Club

Call **WEBster 9-9635** after Noon  
**HARRY LAWRENCE**

### REFINISHING

NATURAL WOOD, also EBONY OR WHITE

Call **POplar 1-7836**

**BILL MERVILLE**

**FOR SALE** HAMMOND B-2 CONSOLE, SPLIT VIBRATO, PERFECT CONDITION. Also JR-20 Speaker. SYcamore 7-4273 (after 7 pm)



Pictured above is a group of LAOBC members attending the first annual party of the Club on September 28, 1951, at the Officers Town Club in Long Beach.

In front row, kneeling, are Bob Barron, Harry Baker, Harry McDade. At the console are Bob Garretson, Rose Diamond, Bob Hull. Standing are Lynne Heiss, Leonard Smith, Helen Smith, Madeline Willey, Harry Lawrence, then Boyd Williams, Mark Wright, Margaret Gordon, Leonard Weaver, Carroll Savage, Vivian Benedict, Veda Wright and part of Bertha Taylor.

FOR BREAKFAST PHOTOS OF YOUR  
FAVORITE ORGANISTS, CALL OR WRITE

**Frank G. Ogle**

8410 S. HOOVER ST., LOS ANGELES

PLasant 1-4317

## PAT WADE

**ELECTRIC ORGAN SERVICE**

Box 216, Highland Park, LA 42

CLevland 6-2077

**LESLIE TONE CABINETS**

**Electric Organ Equipment Co.**

524 N. LA CIENEGA, LOS ANGELES

OLeander 5-8517

ELLIS SAVILLE

JACK KIRK



## Restaurant

Announces the Engagement of

## Madeline Willey



At the Organ

**6309 E. Washington Blvd.**  
**(AT THE SANTA ANA FREEWAY)**  
RA 3-6278

# MARCH BREAKFAST REGISTER

March Breakfast (Con't.)



## (LAOBC Members Attending)

HAROLD ANDERSEN	KEN KECK
BOB BARRON	HARRY LAWRENCE
BEE BLONK	LORETTO LEE
BOB BROWN	DAVID MAY
FRANCIS J. CARTER	JIMMIE MEANS
JEANIE COLBORNE	EDDIE MEIKEL
RITA COLLINS	BOB MOREAU
KERMIT DART	JOHAN McNEIL
JIM DAY	EDDIE PADDOCK
HELEN DELL	VERN PETERSON
ROSE DIAMOND	NINA RUSSELL
CARMEN DUNN	CARROLL SAVAGE
HELEN DUREN	LARRY SEIBERT
BOB GARRETSON	CARL SIEMON
ROGER HAIL	BILL THOMSON
BOB HAMILTON	POMPING VILA
TOMMY HEARN	DON WARNER
LYNNE HEISS	MADELINE WILLEY
ROBERTA JAYNE	EMILE WILLIAMS
EILEEN WOODYARD	

ter, the perennial percussionist, accompanied by Tom Hearn, vied with violinist Johnny Creach (accompanied by Nina Russell) for audience approval, with a generous and vociferous portion of same going to each. Other guests were Bob Hall, of Penny-Owsley; Marge Wood, Margaret Miller, Bill Denton, Dick Dunn, Clayton Cowan, George Newell, Mary Judd, Earnie Foster, Paul Estes, Ruth Chic, Virginia Sooter, Roberta Lynn and Bob Elliott, of the Pianists' Club.

High spot of the afternoon was host Thomson's two exciting sessions at the Kelly-customized concert console. With his super-special arrangements of *Love For Sale*, & *Slaughter On Tenth Avenue*, to name just a couple, he held the audience spellbound. The spell was broken hilariously by MC Brown when, after *Stars And Stripes Forever*, with its brilliant pedalwork and 130-watt finale, he requested the organist to "play something we can all sing!" (Sound familiar?)

REMEMBER —

# Julie's

3730 South Flower Street  
Los Angeles

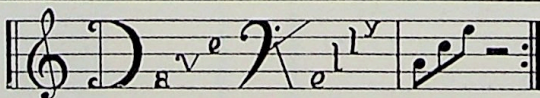
(EXPOSITION BLVD. EXIT, HARBOR F'WY)

**BOB BROWN AT THE PIANO**  
Nightly Except Sunday

## Jack Richmond

ORGANISTS' SERVICE

1650 Broadway, New York 19, N. Y.  
SERVICING POPULAR MUSIC TO PROFESSIONAL ORGANISTS AND MUSICIANS THROUGHOUT THE COUNTRY



SALES

● ELECTRONICS COMPANY ●

SERVICE

FACTORY AUTHORIZED SERVICE AGENCY FOR HAMMOND — MAAS — CONN —  
CUSTOM DESIGNING: CHIMES — MUSIC SYSTEMS — TONE CABINETS — VIBRAHARPS  
ELECTRIC ORGANS and ACCESSORIES

**7200 BEVERLY BOULEVARD ● LOS ANGELES ● WEBSTER 9-4918**



BALDWIN PIANO & ORGAN COMPANY

IN ASSOCIATION WITH

THE LOS ANGELES ORGANISTS  
BREAKFAST CLUB

PRESENTS

AN  
ORGAN  
EXTRAVAGANZA

MONDAY, NOVEMBER 21<sup>ST</sup>

8:30 P.M.

THE WILSHIRE EBELL THEATRE  
LOS ANGELES, CALIFORNIA

## PROGRAM

### I JERRY GERARD

(Baldwin 2-Manual Concert Organ, Model 6)

1. Petite Suite De Concert . . . . . *Colerige & Taylor*  
(First Movement)
2. Carillon . . . . . *Leo Sowerby*
3. Trumpet Minuet . . . . . *Alfred Hollins*
4. Improvisation . . . . . *Gerard*
5. Finale in B Flat . . . . . *Cesar Franck*  
(Second Movement)

### II FRANK STITT

(Baldwin Home Theatre Organ, Models HT-2 and CT-2)

1. A Walk In The Black Forest
2. Our Love Is Here To Stay
3. Satin Doll
4. Caravan

### III INTERMISSION

(Drawing for Door Prizes)

The beautiful Baldwin Organs used in this program are available at the Baldwin stores and dealers listed on the back of this program.

## PROGRAM

### IV BILL THOMSON

(Baldwin Home Theatre Organ, Model HT-2)

1. From the Pen of . . . . . *Valle & Valle*
2. From the Pen of . . . . . *Gershwin*
3. From the Pen of . . . . . *Thomson*
4. From the Pen of . . . . . *Lehar*

### V GAYLORD CARTER

(Baldwin Home Theatre Organ, Model HT-2)

1. Overture
2. The Organ and the Silent Screen  
The Gold Rush, Starring Charlie Chaplin, 1925  
(Excerpt)

### VI EDDIE OSBORN

(Baldwin Home Theatre Organ, Model HT-2)

1. Show Tune Medley
2. Having Fun with the Baldwin Organ  
Including Community Sing Along

### VII SURPRISE!!!!!!

Proceeds from this extravaganza will be donated to The Los Angeles Organists Breakfast Club Scholarship Fund.

BALDWIN PIANO & ORGAN COMPANY

3273 Wilshire Blvd.  
Los Angeles

14611 Ventura Blvd.  
Sherman Oaks

VALLEY PIANO CO.  
933 West Olive Avenue  
Burbank

BILLINGS-BALDWIN PIANO & ORGAN CO.  
3912 Atlantic Blvd.  
Long Beach

DALE HARRIS PIANO & ORGAN CO.  
7114 Topanga Canyon Blvd.  
Canoga Park

VANLANDINGHAM'S  
4767 Holt Avenue  
Montclair

FOLK'S PIANO SHOP  
2119 North Long Beach Blvd.  
Compton

ABERNATHY'S BALDWIN PIANO & ORGAN CO.  
6340 East Colorado Blvd.  
Pasadena

WARD'S BALDWIN STUDIO  
1801 Newport Blvd.  
Costa Mesa

WOODWORTH PIANO & ORGAN SALES  
515 North Main Street  
Santa Ana

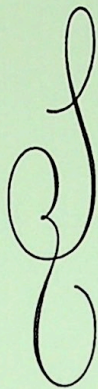
HOLLYWOOD PIANO RENTAL CO.  
1647 North Highland Avenue  
Hollywood

PIANO & ORGAN CENTER  
1433 4th Street  
Santa Monica

HAWKINS PIANO & ORGAN CO.  
860 East Whittier Blvd.  
La Habra

BILLING'S-BALDWIN PIANO & ORGAN CO.  
23244 Hawthorne Blvd.  
Torrance

PENFIELD PIANO CO.  
828 West Lancaster Blvd.  
Lancaster



**Los  
Angeles  
Organists'  
Breakfast Club**

*presents*

**A HOLIDAY MUSICALE**

*with*

**Toys for Tots of the  
Childrens' Hospital**



**MUSICIANS' AUDITORIUM**

**3:00 p.m. - December 11, 1966**

# PROGRAM

## RITA COLLINS

Minute Waltz ..... *Chopin*  
March of the Toys ..... *Herbert*  
Memories of Al Jolson  
Adeste Fidelis

## BOB HAMILTON

Moonlight in Vermont ..... *Suessdorf*  
Yellow Bird  
Exodus ..... *Gold*  
Around the World ..... *Young*

## CARL SIMONE and BOB GARRETSON

Concerto in G for Two Organs ..... *Soler*  
Filigrana ..... *Robert Brown*  
A Czech Christmas Carol ..... *arr. Simone*

## INTERMISSION

## LARRY SEIBERT

Little Darlin' ..... *Hefti*  
Lonesome Road ..... *Austin*  
Born Free ..... *Mandel*  
Route 66 ..... *Troup*

## FRANCIS CARTER

Caravan ..... *Ellington-Tizol*  
Canadian Sunset ..... *Heywood*  
On a Clear Day ..... *Lerner*  
Carter Blues ..... *Carter*

We wish to thank the Penny-Owsley Music Co. for the use of the Hammond Organ, and the Baldwin Piano and Organ Co. for the Baldwin Organ. Their cooperation is indeed appreciated.

A  
FALL  
MUSICALE

*(A Production of the Los Angeles Organists Breakfast Club, Inc.)*

**October 31st, 1965 — 3 P.M.**

*ANN LEAF*

*DEL CASTILLO*

*Guest Artist: GEORGENE KRAMER*  
*1965 Scholarship Winner*

# PROGRAM

## DEL CASTILLO

*at the Gulbransen Rialto Theatre Organ*

- MACK THE KNIFE (Variations) ..... *Kurt Weil*  
SABRE DANCE ..... *Khachaturian*  
A GARLAND OF WALTZES  
Minute Waltz ..... *Chopin*  
Zigeuner ..... *N. Coward*  
Falling In Love With Love ..... *R. Rodgers*  
Waltz Of The Flowers ..... *Tchaikovsky*  
MIDNIGHT IN MAYFAIR ..... *Newall Chase*  
FOR MEN ONLY  
Stout Hearted Men ..... *Romberg*  
My Man ..... *M. Yzain*  
March Of The Musketeers ..... *R. Friml*  
GIRLS-GIRLS-GIRLS  
The Girl That I Marry ..... *I. Berlin*  
The Girl Friend ..... *R. Rodgers*  
The Most Beautiful Girl In The World ..... *R. Rodgers*

### INTERMISSION

## GEORGENE KRAMER

*at the Baldwin Organ*

- TOCCATA from Suite Gothique ..... *Boellmann*  
PRIERE NOTRE-DAME ..... *Boellmann*  
CARILLON-SORTIE ..... *H. Mulet*

### INTERMISSION

# PROGRAM *Continued*

## ANN LEAF

*at the Gulbransen Rialto Theatre Organ*

- FANTAISIE IMPROMPTU ..... *Chopin*  
BLUE VIOLINS ..... *Ray Martin*  
WEST SIDE STORY ..... *L. Bernstein*  
Tonite  
I Feel Pretty  
Somewhere  
Promenade  
Jump  
Maria  
America  
CHACONNE ..... *Durand*  
Ala Bolero (from Miss Leaf's album) "That Ain't The Way I Heard It"  
MOON MEDLEY  
Reaching For The Moon ..... *I. Berlin*  
Moonglow ..... *Mills*  
POWER HOUSE ..... *Raymond Scott*

### FINALE

---

## *Acknowledgments*

We wish to thank BALDWIN PIANO & ORGAN CO. for furnishing the organ and speaker equipment.

We also wish to thank "KEYS TO MUSIC" for furnishing the Gulbransen Rialto Theatre Organ and speakers.

# Los Angeles Organists Breakfast Club, Inc.

*A Non-Profit Corporation*

## *Officers*

BOB ELLIOTT, *President*

RITA COLLINS, *Secretary*

BUD TAYLOR, *Vice-President*

DORYCE TALBOTT, *Treasurer*

## *Executive Council*

DOROTHY LEONARD

JOY McCOY

LARRY BEYER

AL DURHAM

JERRY HEIMAN

HARRY JENKINS

BOB GARRETSON, *Concert Chairman*



There is still time to make application for the April 30th 1966 scholarship auditions.

Inquire at the desk on your way out for complete information concerning scholarship auditions—or telephone Bob Garretson after 11 a.m., 767-3706.

---

### **Keys to Music**

6251 Van Nuys Boulevard  
Van Nuys, California

781-3664    873-5125



### **Baldwin Piano & Organ Co.**

3273 Wilshire Boulevard  
Los Angeles, California

387-5221

---



THE LONG BEACH PROFESSIONAL ORGANISTS CLUB

Presents a

# Benefit Concert

TO PURCHASE AN ORGAN FOR OUR MILITARY FORCES  
HOSPITALIZED ON THE U. S. HAVEN HOSPITAL SHIP

Sunday, October 16, 1966

2:30 P. M.

EMPIRE ROOM

Edgewater Inn

Pacific Coast Highway, at 2nd Street, Long Beach, Calif.

## Artists

(In Order of Appearance)

Introduction of Artists by

**INA LaGRANGE**

Mistress of Ceremonies

## *JERRY HEIMAN*

at the Rodgers 3-manual Theatre Organ

## *BILLIE CAMPBELL*

At the Hammond H-100

---

Intermission

Bar Will Be Open

### **GUEST ARTIST**

Special Added Attraction

## *EDDIE BAXTER*

At the Lowery Theatre Organ

## *DON LEE ELLIS*

At the Hammond H-100

### **AFTER THE CONCERT**

Door Prizes — Cocktail Hour — Jam Session

### **PATRONS:**

Bob Moreau, President, Victor Hugo's

Mr. and Mrs. Jack Bass, Victor Hugo's

Jim and Tony Gibson, Lucy's Restaurant

Jack and Madeline Franks, 488 Keys

Paul and Rita Collins

Jimmie Means, Sam's Sea Food

Mollie Richers

Don Lee Ellis, Vice President, Victor Hugo's

Chris and Stella, Christian's Organ and Piano Center

Joseph Saul

Mr. and Mrs. Boyd Seright

Concert hall courtesy of Jim Stockman's Edgewater Inn, and  
thanks to Grant Styles for making arrangements

Rodgers Organ courtesy of Burbank Music House, Burbank

Hammond Organ courtesy of Bob Pearce Hammond Organ  
Studio of Long Beach

Lowery Organ courtesy of Tailford Music Studio of Bellflower

Patron Members, donation of \$5.00 or more

BILL BYE'S

# *Keys to Happiness*

PRESENTS -

*Ann Leaf*



ON THE

STEREO GULBRANSEN RIALTO  
THEATRE ORGAN



WE CORDIALLY INVITE YOU TO STOP IN AT OUR STORE AT -

16529 E. WHITTIER BLVD., WHITTIER  
(IN ROSE PLAZA AT VALLEY HOME)  
PHONE (213) 694-1076

# PROGRAM

## PART ONE

- HALF A SIXPENCE . . . . . HENECKER
- MARCH FROM "AIDA" . . . . . VERDI
- SELECTIONS FROM "FIDDLER ON THE ROOF" . . . . . BOCK  
THE FIDDLER ON THE ROOF  
FAR FROM THE HOME I LOVE  
MATCHMAKER  
IF I WERE A RICH MAN  
SUNRISE, SUNSET  
TO LIFE!
- NOCHE CARIBE . . . . . PERCY FAITH
- GAVIOTTA . . . . . PERUVIAN WALTZ . . . . . MELLE WEERMSA
- DANCE OF THE COMEDIANS . . . . . SMETANA  
FROM "THE BARTERED BRIDE"
- BLUE VIOLINS . . . . . RAY MARTIN
- MOUNTAIN GREENERY . . . . . RODGERS AND HART  
MY ROMANCE . . . . . RODGERS AND HART
- SHALL WE DANCE? . . . . . RODGERS AND HAMMERSTEIN  
PEOPLE WILL SAY . . . . . RODGERS AND HAMMERSTEIN
- NO STRINGS . . . . . RODGERS  
DO I HEAR A WALTZ . . . . . RODGERS AND SONDHEIM
- CLIMB EVERY MOUNTAIN . . . . . RODGERS AND HAMMERSTEIN

## INTERMISSION

## PART TWO

- LAWRENCE OF ARABIA . . . . . JARRÉ
- CARNIVAL (A DAY IN THE LIFE OF A FOOL) . . . SAMBA DE ORFEU  
FROM MOTION PICTURE "ORPHEUS"
- TASTE OF HONEY . . . . . MARLOW AND SCOTT
- ROUMANIAN RHAPSODY . . . . . ENESCO
- WAVES OF THE DANUBE A LA TANGO MYSTERIOSO . . . IVANOVICI  
(FROM THE RECORD "THAT AIN'T THE WAY I HEARD IT"  
RECORDED BY MISS LEAF)
- LITTLE BOAT . . . BOSSA NOVA . . . . . MENESCAL  
SPANISH FLEA . . . . . WECHTER  
WOW! WOW! WOW! . . . . . CURBELO AND CAMACHO
- PEOPLE . . . . . STYNE  
FROM "FUNNY GIRL"
- THEME FROM "A MAN OR A WOMAN"
- GEORGIA GIRL
- A GROUP OF OLD FAVORITES

