

BLUE ICE

BUD TAYLOR

BRIGHT WALTZ (In 1)

MF

The image displays a handwritten musical score for a piece titled "Blue Ice" by Bud Taylor. The score is written on four systems of five-line staves. The top two staves of each system are in treble clef, and the bottom two are in bass clef. The key signature is one sharp (F#), and the time signature is 3/4, indicated by the "BRIGHT WALTZ (In 1)" title. The notation includes various rhythmic values such as eighth and sixteenth notes, rests, and dynamic markings like "MF". There are also some handwritten annotations and corrections throughout the score, including some illegible scribbles and markings above the notes.

Handwritten musical notation for the first system, featuring a treble and bass staff with complex chordal textures and melodic lines.

Handwritten musical notation for the second system, continuing the complex chordal and melodic patterns.

Handwritten musical notation for the third system, showing further development of the musical themes.

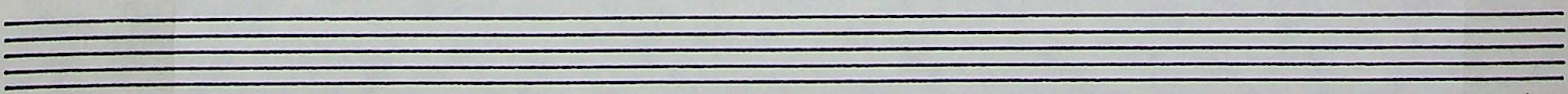
Handwritten musical notation for the fourth system, concluding the piece with sustained notes and a final cadence.

Handwritten musical notation for the first system. The treble clef staff contains a melody with notes and rests. The bass clef staff contains a bass line with notes and rests. The key signature has two flats (B-flat and E-flat). The time signature is 3/4. The system consists of five measures.

Handwritten musical notation for the second system. The treble clef staff continues the melody. The bass clef staff continues the bass line. The key signature remains two flats. The system consists of five measures.

Handwritten musical notation for the third system. The treble clef staff continues the melody. The bass clef staff shows a change in the bass line. The key signature remains two flats. The system consists of five measures.

Handwritten musical notation for the fourth system. The treble clef staff continues the melody. The bass clef staff continues the bass line. The key signature changes to one sharp (F#). The system consists of five measures.



The image displays four systems of handwritten musical notation for guitar. Each system consists of a treble clef staff and a bass clef staff. The music is written in a key signature of one sharp (F#) and a common time signature (C). The notation includes various rhythmic values such as quarter, eighth, and sixteenth notes, as well as rests. There are numerous accidentals (sharps and naturals) and dynamic markings like 'p' (piano) and 'pp' (pianissimo). The first system begins with a treble clef staff containing a series of chords and a bass clef staff with a simple accompaniment. The second system continues with similar notation, featuring some slurs and ties. The third system shows more complex rhythmic patterns and dynamic changes. The fourth system concludes with a final chord and a fermata over a note in the bass staff. The handwriting is clear and legible.

Handwritten musical notation for the first system, featuring treble and bass staves with complex chordal textures and rhythmic markings.

Handwritten musical notation for the second system, continuing the complex chordal textures and rhythmic patterns.

Handwritten musical notation for the third system, including a "b.h." marking and various rhythmic notations.

Handwritten musical notation for the fourth system, showing a double bar line and some final notes.