

# CANDY





IT'S YOUR  
STATE THEATRE  
HIT  
PARADE

with  
**BUD**  
at the  
**BARTON**  
console

SELECT YOUR FAVORITE SONGS  
ON REQUEST CARDS

for  
**COMING  
COMMUNITY  
SONG-FESTS**

**DROP YOUR  
REQUESTS  
FOR OTHER PERFORMERS  
HERE**





Now Playing

THE BIGGEST MUSICAL UNDER THE SUN

ANNIE GET YOUR GUN

STARRING BETTY HUTTON HOWARD KEEL

CHARLES BRUCE MURRAY BOB HOPE

OPENING FOR INDEFINITE  
SUNDAY JULY 16



THE STATE RETURNS TO  
**ORGAN MUSIC**

*features*

*'KALAMAZOO'S OWN'*

**Bud Taylor**

*at the* BARTON & HAMMOND CONSOLES

*DIRECT FROM*

5 YEARS ENGAGEMENTS IN NEW YORK CITY, N. Y.

ORGAN OVERTURES....

*and*

PATRON PARTICIPATION SONGFESTS

**'BUD'S'**

NEW VERSION OF SOMETHING NEW & DIFFERENT

*Foyer Organalities*

REQUEST NUMBERS FEATURED.....

IT'S YOUR  
STATE THEATRE  
HIT  
PARADE

with  
**"BUD"**  
at the  
**BARTON**  
*console*

SELECT YOUR FAVORITE SONGS.....  
ON REQUEST CARDS

for  
**COMING  
COMMUNITY  
SONG-FESTS**

**DROP YOUR  
REQUESTS  
FOR GREAT HIGHLIGHTS  
HERE**





POST CARD

ACTUAL PHOTOGRAPH

FRANKLIN PHOTOS, NEW YORK 17, N. Y.









*Redding Studio*



Radium Studio-



Radium Studios

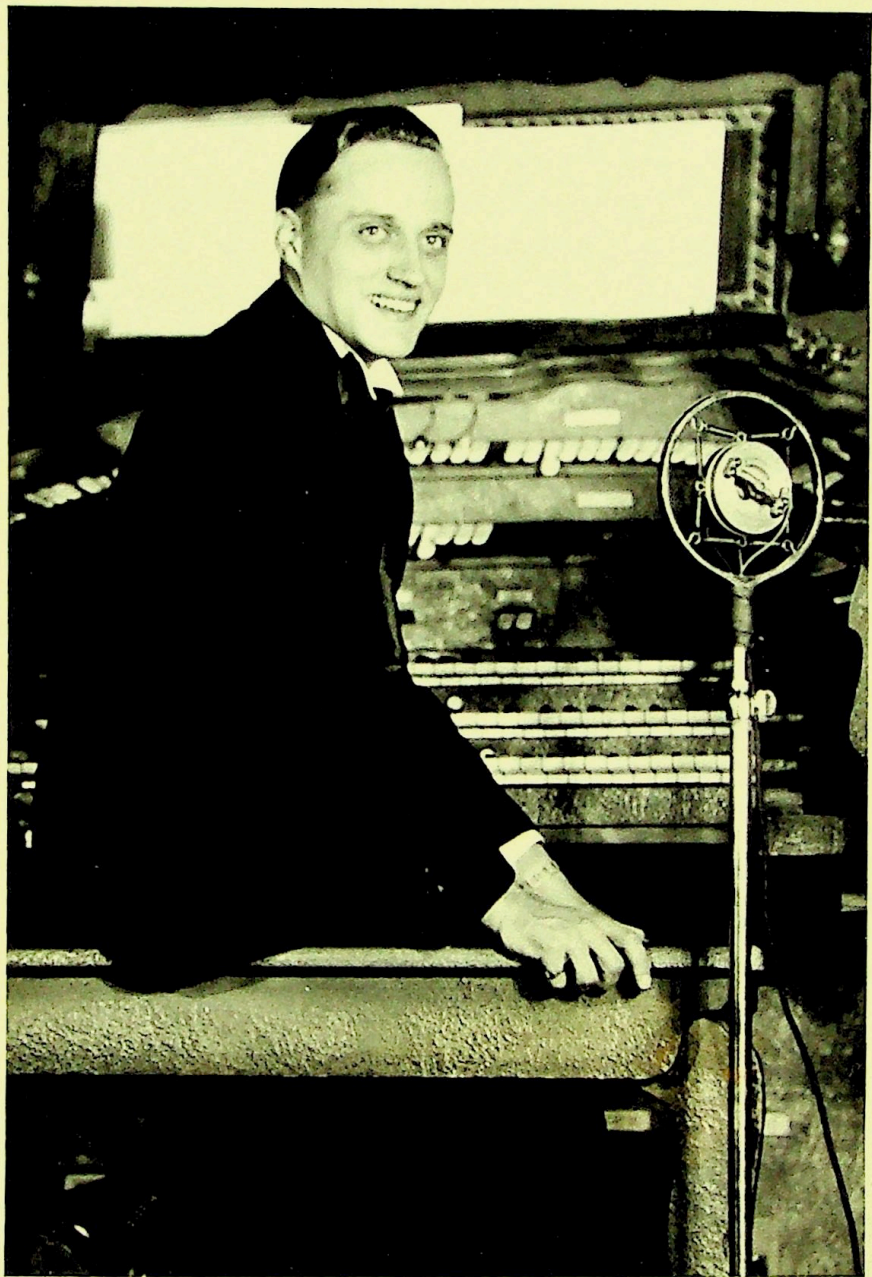




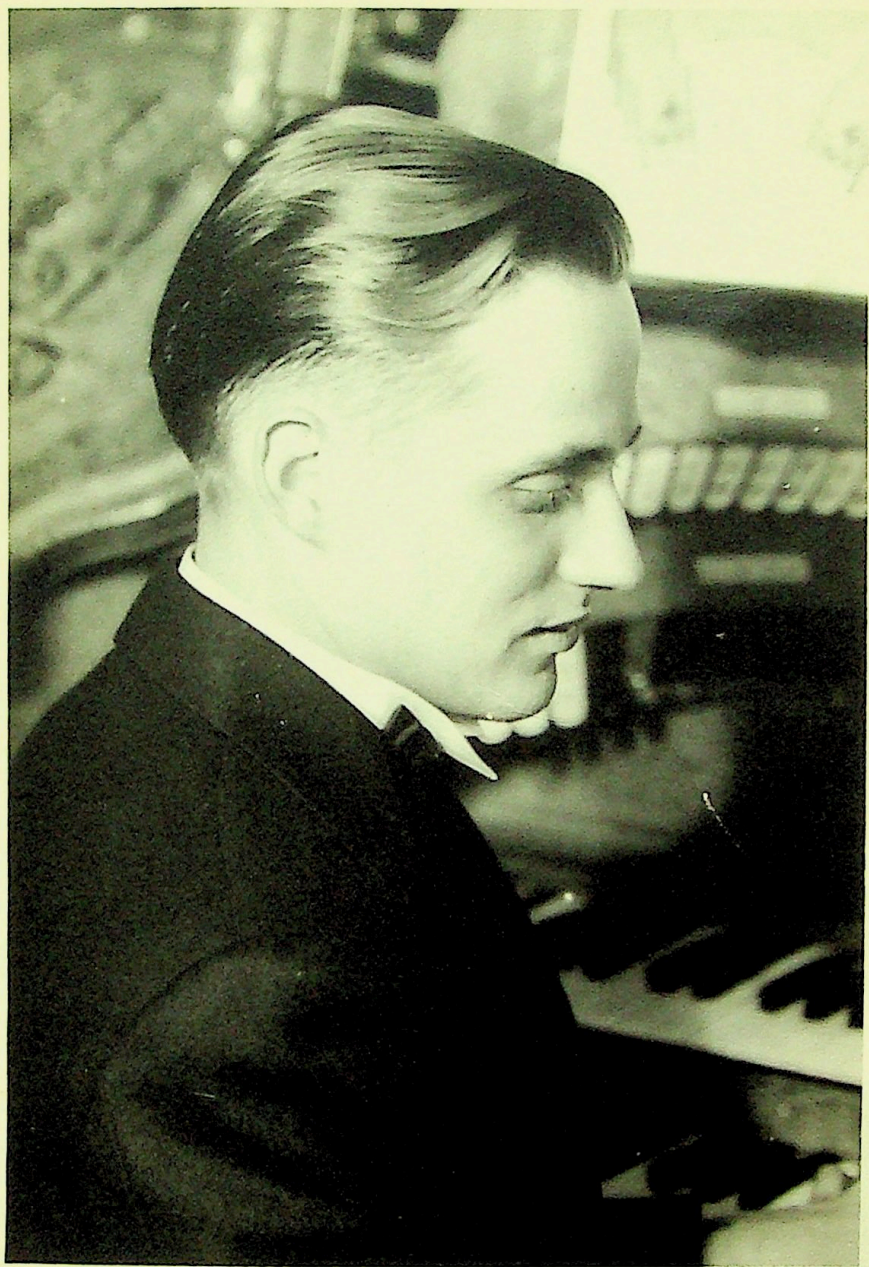
Fac. 7-Math 1936

RONALD H. ABBEY  
Scientific Photography  
234 SOUTH BURDICK ST.  
KALAMAZOO, MICH.

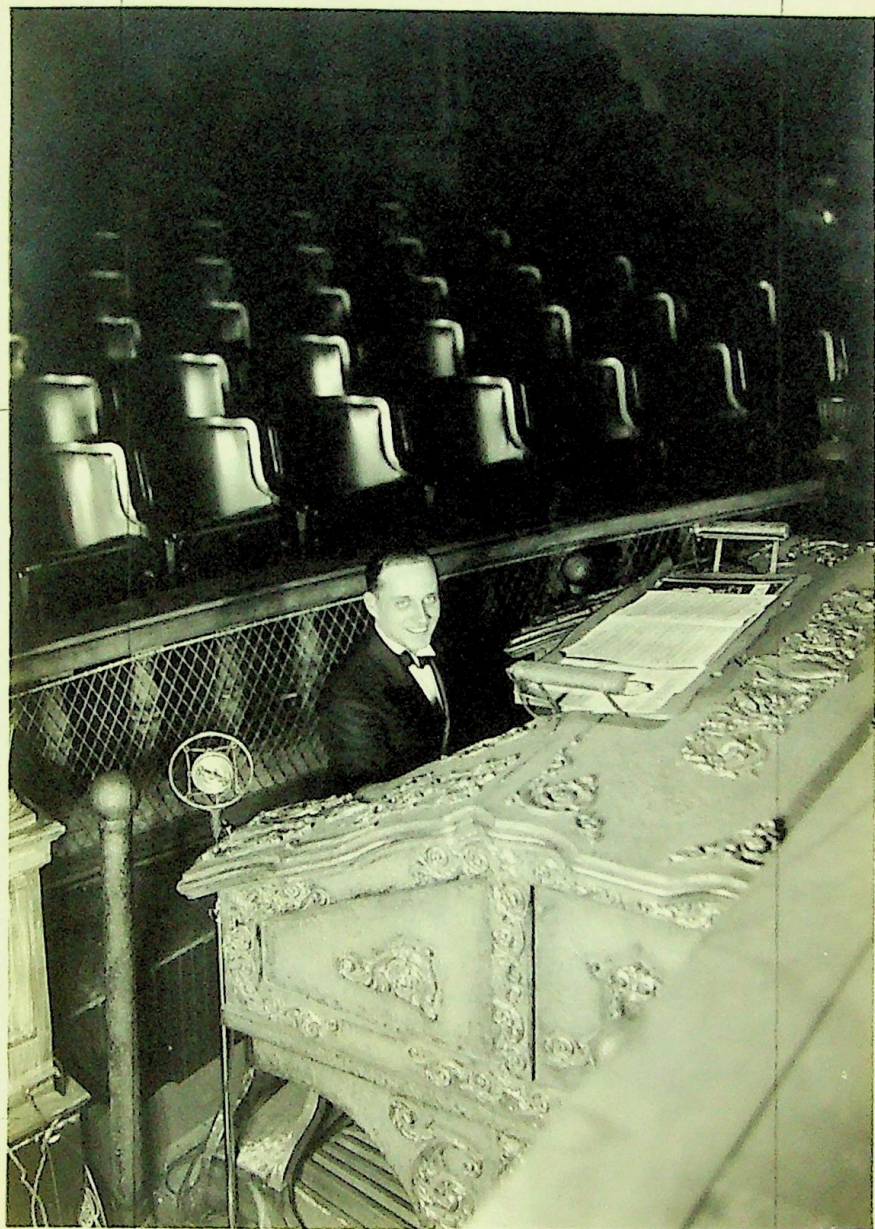










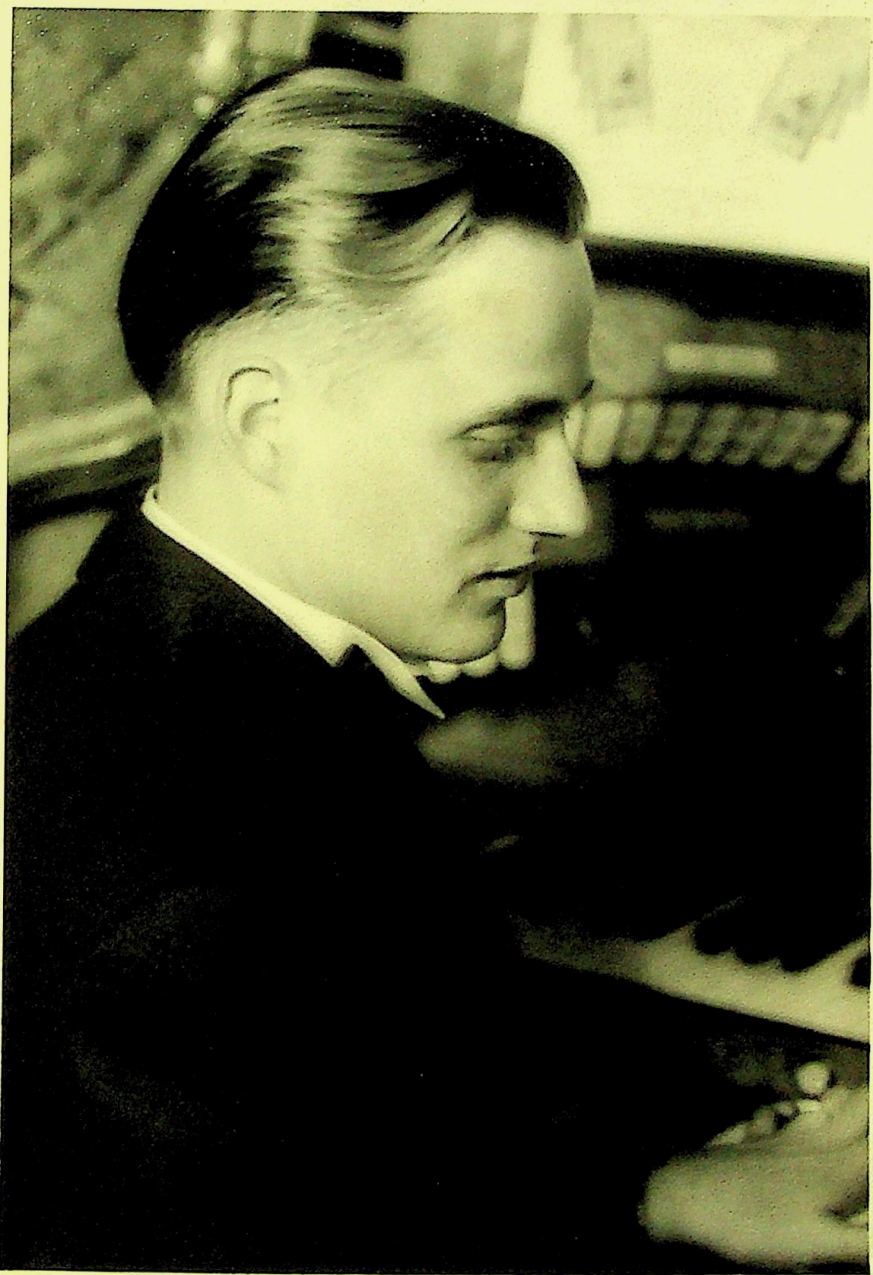




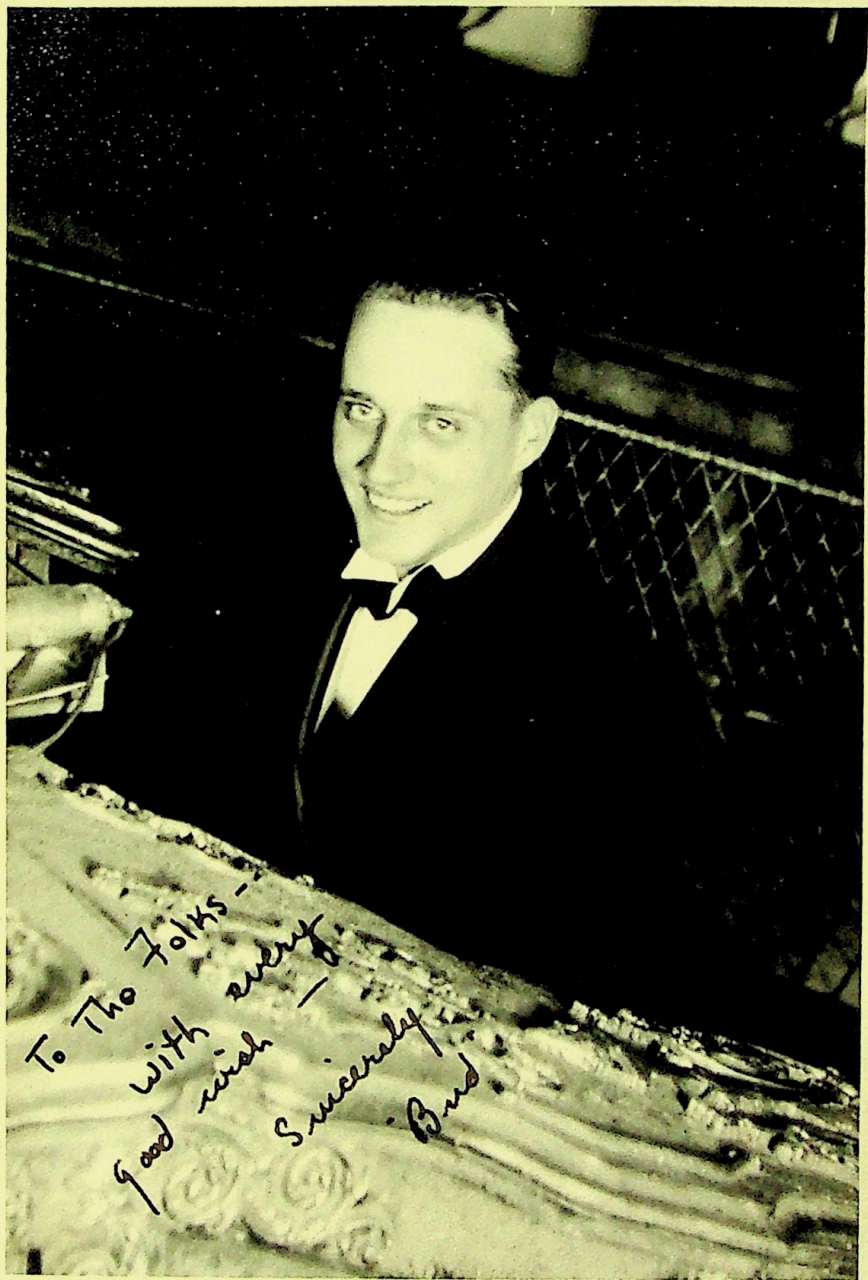
Fall 2 Mitt 1936

11

RONALD W. ABNEY  
COMMERCIAL PHOTOGRAPHER  
25 SOUTH BIRDICK ST.  
WILMINGTON, DEL.







To The Folks -  
good with every  
good wish -  
Sincerely  
Bud

